

What is an Outbreak?

An outbreak is when a contagious infection is identified on an inpatient unit, making some patients sick.

Depending on the type of infection, some or all patients on the outbreak unit will require isolation to stop the spread. If you are visiting a patient in an isolation room, please follow these instructions:

- Clean your hands upon arriving to the unit.
- Follow the instructions on the isolation sign posted at entrance of the patient room. It will indicate the type of personal protective equipment (PPE) that must be worn in the room.
- If you do not know how to use the PPE, ask a staff member for help.
- When leaving the isolation room, remove the PPE, throw it away as directed by the unit and clean your hands.

If your family member is on a unit declared in outbreak, signage will be posted at the entrance of the hospital and on the unit that is in outbreak. This will be visible as soon as you arrive on the unit. Outbreak information is also posted on our Health Sciences North website, hsnsudbury.ca/covid-19

Contact Information

If you have questions or concerns with any of the information, please contact a member of you or your loved one's care team by calling 705-523-7100 or 1-866-469-0822 and ask to speak with the unit Charge Nurse or Clinical Manager.

Please ask to speak with the Manager on call if you are requiring assistance after business hours, on the weekend or on a statutory holiday.

If you still have questions or concerns that cannot be addressed by your care team, please contact:

Patient Relations

705-523-7100 ext. 3737
patientrelations@hsnsudbury.ca



Visiting Patients During an Outbreak

Instructions to Visitors and Designated Care Partners (DCPs)



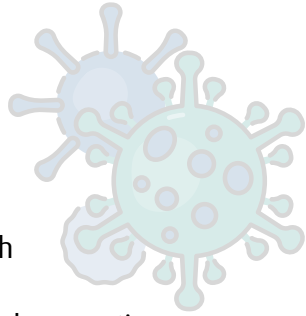
Health Sciences North
Horizon Santé-Nord



Health Sciences North
Horizon Santé-Nord

Do Not Visit if:

1. You are not feeling well or have ANY new or worsening symptoms:



- Fever or chills
- Cough
- Headache
- Sore throat
- Shortness of breath
- Extreme fatigue
- Runny nose or nasal congestion
- Nausea, vomiting or diarrhea
- Muscle aches or joint pain
- Decreased or loss of sense of taste or smell

2. You have tested positive for COVID-19 in the last 10 days.

3. You have had close contact with a person who has COVID-19 in the last 10 days.

While Visiting, Do Not:

- Eat or drink in the patient's room
- Share the patient's food
- Sit on the patient's bed
- Use the patient's personal articles including utensils, glasses, cups etc.
- Use the patient's bathroom or sink
- Open curtains in between patients if you are visiting a patient in a shared room and remember to keep 6 feet apart from others in the room.

Preventing the spread of infection is a top priority at Health Sciences North.

As a visitor and DCP, you play an important role in the prevention and control of infection. Masks continue to be required for all visitors and DCPs in all inpatient areas and patient rooms.

Cleaning Your Hands

is the single most important way to reduce infections.

- Clean your hands often, including when you enter and exit the patient room
- Clean your hands after coughing or blowing your nose, putting on or taking off PPE, etc.
- Use the alcohol-based hand rub (ABHR) placed around the entry of the patient's room.

Proper technique: rubbing your hands for 15 seconds with ABHR until your hands are dry.



NOTE: those who do not follow these precautions will be asked to leave.



Temporary visitation restrictions for visitors and/or DCPs may be put into effect at anytime during an outbreak. This means that you may be asked to leave or not visit for a period of time. In this case, visitation may be allowed with approval from the unit manager for compassionate reasons.

Designated Care Partners (DCPs) are crucial members of the care team and provide essential physical, emotional, social and spiritual support. DCPs are identified by the patient or substitute decision maker and are usually family members or other persons of significance in the life of the patient. They work with the healthcare team to provide care, care planning and decision making.

Visitors play an important social role for patients, however, they do not engage as active partners in care.

Units on COVID-19 or Respiratory Outbreak have one (1) Visitor or Designated Care Partner permitted with an alternate.